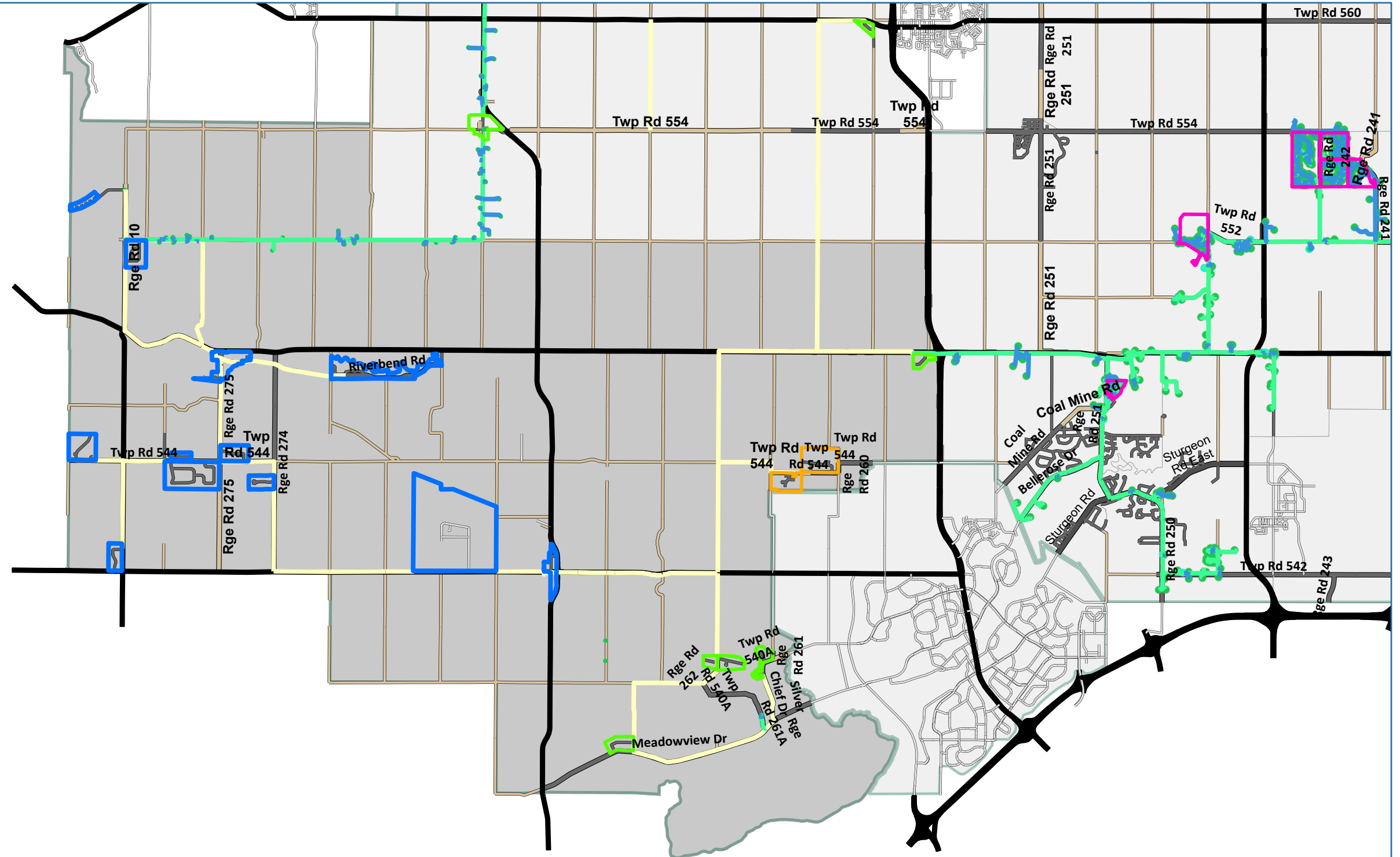


Broadband Work Plan 2026

Division 3



Planned Route

- Joint Funding
- County Funded
- Phase 1 Route

Community Boundary

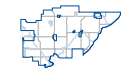
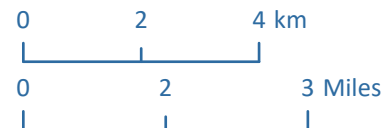
- Pending Construction
- Under Construction

Construction Complete

In Service

Broadband Eligibility

- Core Service Area
- Extended Service Area



Sturgeon County
Geographic Information System

Disclaimer: The information on these maps is based on the most current information available to Sturgeon County Geographic Information Systems. Sturgeon County does not warrant its accuracy or suitability for any particular purpose. The information on this map is not intended to replace engineering, financial or primary records research. Base Map compiled from the Provincial Title Mapping Digital Base 10TM Projection, 115 Degree Central Meridian, NAD 83 Datum Land Ownership derived from Land Titles, Spatial Data Warehouse Ltd. Sturgeon County 2024 All Rights Reserved. Not to be copied in whole or in part.
Document Path: G:\GIS Files\Maps and MXDs\Infrastructure Planning\Broadband\Broadband_OpenHouse_2026.aprx